

Tech Tip

RoadRunner Mobile Digital Video System

Quick Start Guide to Downloading Video using the HDP (Hard Disk Player)

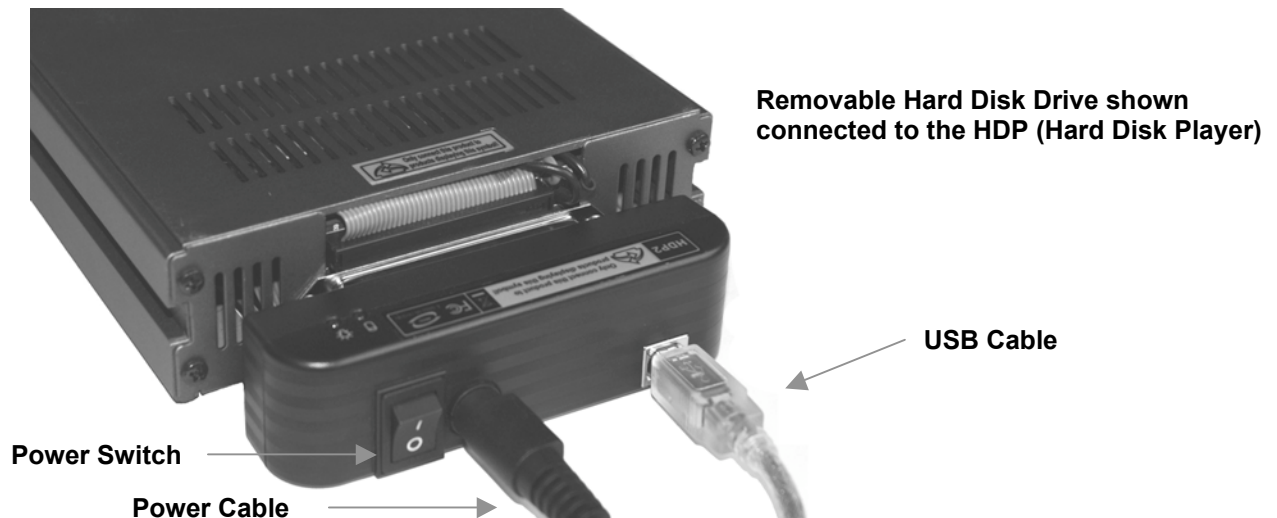
The Hard Disk Player (Part ID: RR-HDP) and HDPlayer Software are used to easily locate and download video from the removable hard disk drive utilizing a PC. All required cables and software are included with the purchase of the Hard Disk Player.

Installing Software:

First, install the HDP Software by downloading from: www.avt-usa.com. After installing the software, the HDP icon will appear on the desktop.

Connecting Hardware:

1. Connect the AC power cable to the power module and the HDP
2. Connect the USB cable to the HDP and a USB port on your computer
3. Connect the HDP to the back of the removable hard drive (as pictured below)
4. Turn the power switch on – the indicator light will turn green to indicate it is powered correctly and will flash red when the hard drive is in use



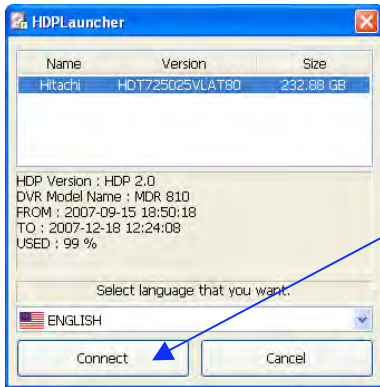
Apollo Video Technology
14148 NE 190th Street – Woodinville, WA 98072
Toll Free: 888-AVT-USA1; Tel: 425.483.7100; Fax: 425.483.7200
www.avt-usa.com

Tech Tip - Quick Start Guide to Downloading Video using the HDP (Hard Disk Player)

Start the HDP Software program:



Double click the HDP icon:  to open the software program.



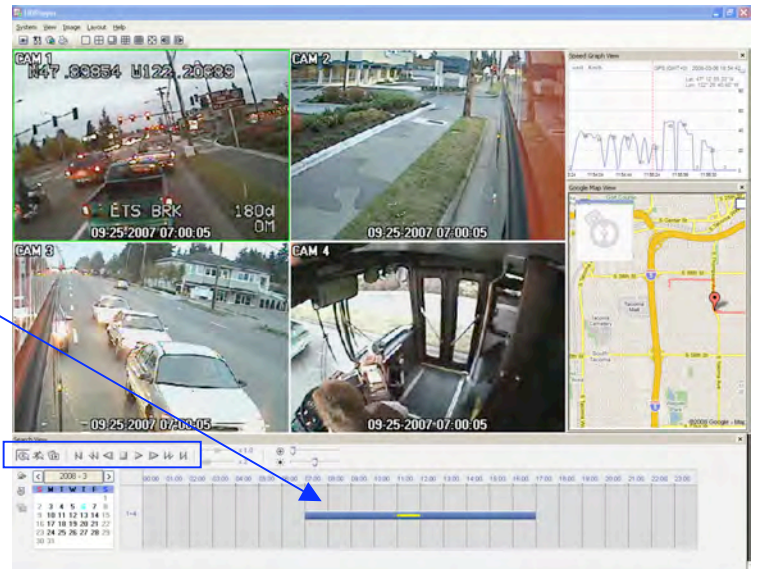
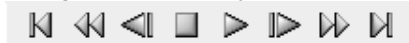
Select the desired hard disk drive and select “Connect” to begin.



For **calendar searching**, select the clock icon, days that have video data recorded will be displayed in black in the calendar field. The day being viewed will be highlighted in light blue.


The blue bar is a timeline that indicates when video has been recorded on the selected day, click on the timeline to select an hour to view.

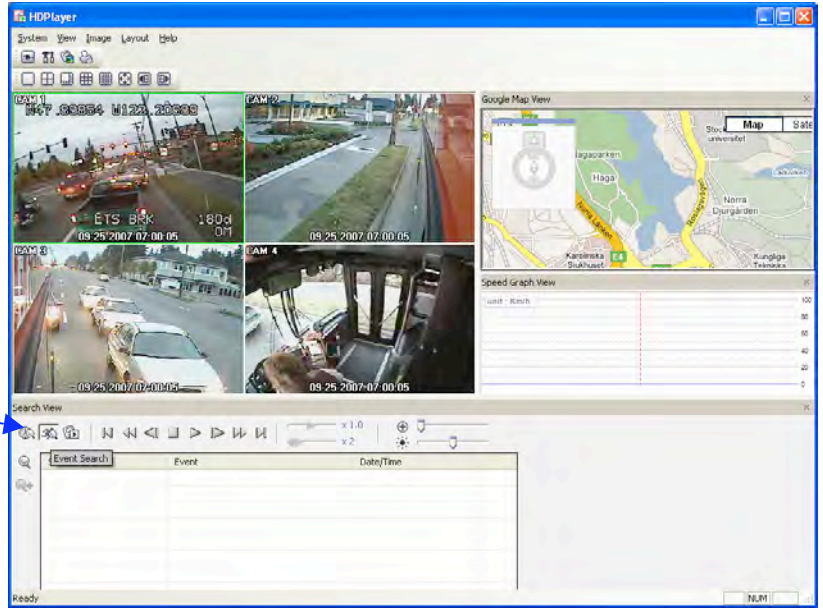
Click the play, fast forward and rewind icons to navigate video playback.



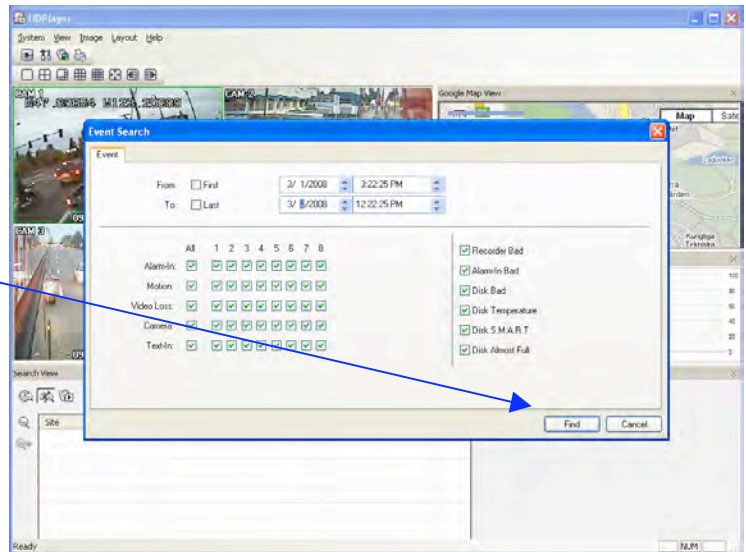
Apollo Video Technology
14148 NE 190th Street – Woodinville, WA 98072
Toll Free: 888-AVT-USA1; Tel: 425.483.7100; Fax: 425.483.7200
www.avt-usa.com

Tech Tip - Quick Start Guide to Downloading Video using the HDP (Hard Disk Player)

 To **search by event**, select the “Event Search” icon.



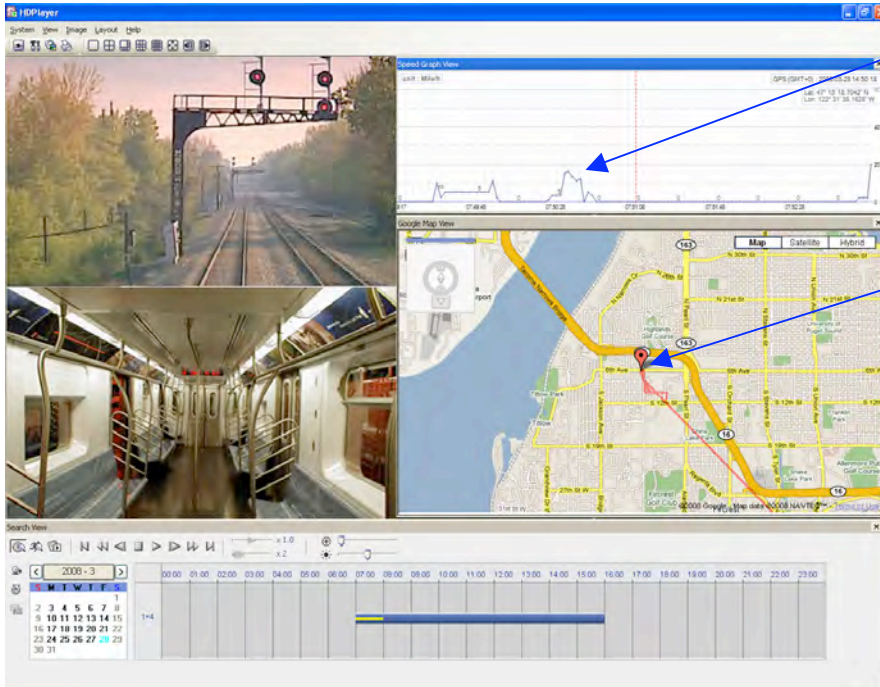
Enter desired search parameters and select “Find”.



Apollo Video Technology
14148 NE 190th Street – Woodinville, WA 98072
Toll Free: 888-AVT-USA1; Tel: 425.483.7100; Fax: 425.483.7200
www.avt-usa.com

Tech Tip - Quick Start Guide to Downloading Video using the HDP (Hard Disk Player)

If your system is equipped with the optional GPS feature, you can also **search by mapping location and speed**. Select a point on the map or speed chart for instant access to video from that location or speed.



The speed graph displays speed based on the GPS data, select a point on the graph for access to video from that speed. The map will automatically update to display the location date for the selected speed.

Historical route data is displayed in red, select a point along the route for access to video from that location.

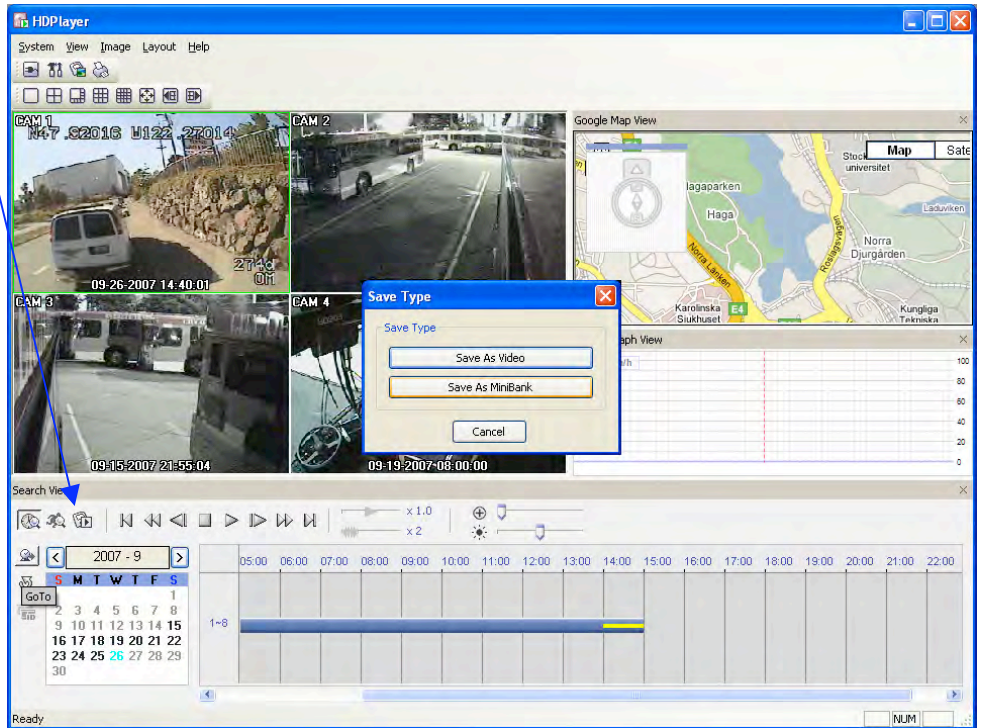
Apollo Video Technology
14148 NE 190th Street – Woodinville, WA 98072
Toll Free: 888-AVT-USA1; Tel: 425.483.7100; Fax: 425.483.7200
www.avt-usa.com

Tech Tip - Quick Start Guide to Downloading Video using the HDP (Hard Disk Player)



To **save video clips**, click on the save icon.

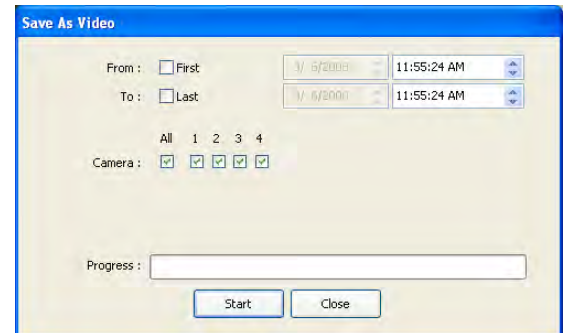
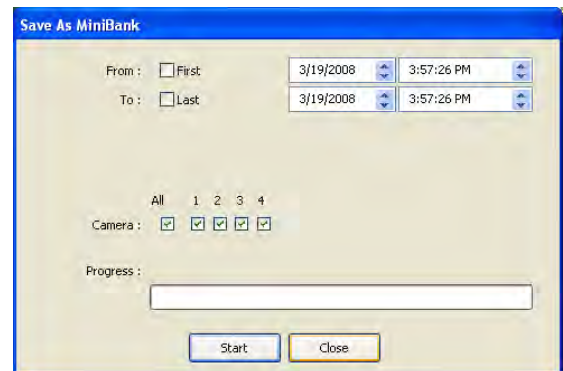
- **Save as Video** – Creates unsecured .avi file, requires Windows Media Player for viewing
- **Save as Minibank** – Creates a secure, encrypted video clip with an embedded player (there are no downloads required for viewing).



To save as video or minibank:

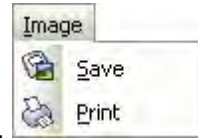
1. Select Camera(s)
2. Select Start and End Date
3. Select Start and End Time
4. Click Start
4. Assign a File Name

By default, files will be saved in the HDP folder of your computer: C:\Program Files\HDP. You can select another location on your computer if desired.

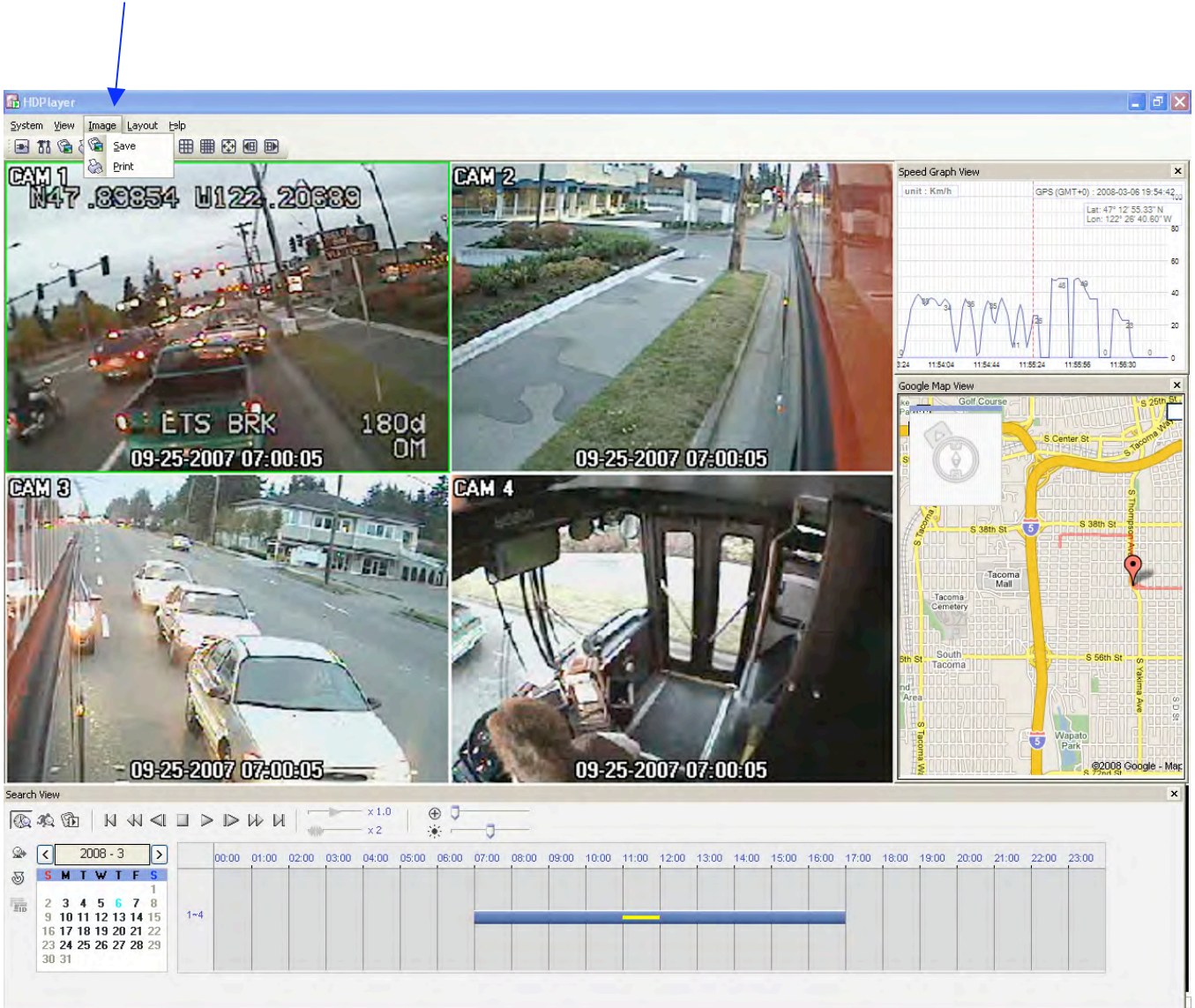


Apollo Video Technology
14148 NE 190th Street – Woodinville, WA 98072
Toll Free: 888-AVT-USA1; Tel: 425.483.7100; Fax: 425.483.7200
www.avt-usa.com

Tech Tip - Quick Start Guide to Downloading Video using the HDP (Hard Disk Player)



To print or save an image, select "image" from the top menu bar and save or print.



The screenshot displays the HDPPlayer application window. The top menu bar includes "System", "View", "Image", "Layout", and "Help". The "Image" menu is open, showing "Save" and "Print" options. The main area is divided into several panels:

- CAM 1:** Street view with coordinates N47.89854 W122.20389, "ETS BRK", "180d OM", and timestamp "09-25-2007 07:00:05".
- CAM 2:** Street view with timestamp "09-25-2007 07:00:05".
- CAM 3:** Street view with timestamp "09-25-2007 07:00:05".
- CAM 4:** Interior view of a vehicle with timestamp "09-25-2007 07:00:05".
- Speed Graph View:** A line graph showing speed in Km/h over time. GPS coordinates are listed as 2008-09-06 19:54:42, Lat: 47° 12' 55.33" N, Lon: 122° 26' 40.60" W.
- Google Map View:** A map showing the location of the cameras in Tacoma, WA, with labels for "Tacoma Mail", "Tacoma Cemetery", "South Tacoma", "Wapato Park", and "Wapato".
- Search View:** A timeline interface for searching video. It includes a calendar for "2008 - 3" and a time axis from 00:00 to 23:00. A blue bar indicates a search range from approximately 07:00 to 17:00.

Apollo Video Technology
14148 NE 190th Street – Woodinville, WA 98072
Toll Free: 888-AVT-USA1; Tel: 425.483.7100; Fax: 425.483.7200
www.avt-usa.com